



LANDHELGISGÆSLA ÍSLANDS  
THE ICELANDIC COAST GUARD

# The Icelandic Coast Guard and MSDI

Hydrographic and Maritime Safety Dept.

BS-NSMSDIWG-9  
1-2 September 2021



# Iceland MSDI 2021

- **We have been more observers than actors for the past 5-10 years in national SDI matters and IHO MSDI matters**
- **We have observed progress in national SDI for the past 10 years and taken part to some extent**
  - **2013-2016: Participated in the INSPIRE project led by the National Land Survey of Iceland**
    - **2011: Digital Spatial Data Infrastructure Act passed by the Icelandic Parliament (Alþingi)**
- **National Land Survey of Iceland**
  - **Has two representatives in Arctic SDI [arctic-sdi.org/](http://arctic-sdi.org/)**
    - **Chair of the Board: Eydis L. Finnbogadóttir, Director General**

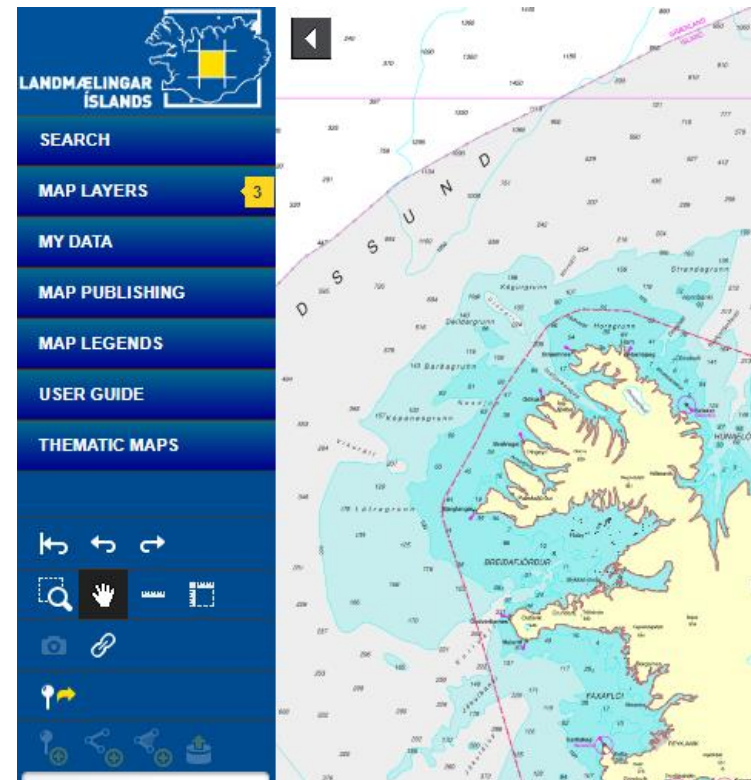


# Iceland MSDI 2021

- National Land Survey of Iceland – geo portal
  - <https://kort.lmi.is/?lang=en>

- Our contribution

- MAP LAYERS
  - Background maps
    - Nautical Charts
  - Administrative units
    - Territorial waters
    - EEZ





# Iceland MSDI 2021

- **We are members of regional MSDI WGs i.e., BS-NSMSDIWG and ARMSDIWG**
  - Our contribution to the work of these WGs has though been minimal
- **Our plan is to look 3-5 year ahead from now with the intention to find out how we can best serve our MSDI related commitments.**
- **MSP/MSDI awareness is growing in Iceland**
  - on ministry, organizational and municipality level
    - E.g., manage and monitor use of Marine Resources





LANDHELGISGÆSLA ÍSLANDS

THE ICELANDIC COAST GUARD