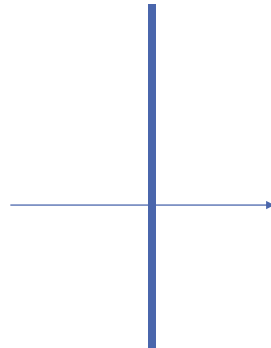
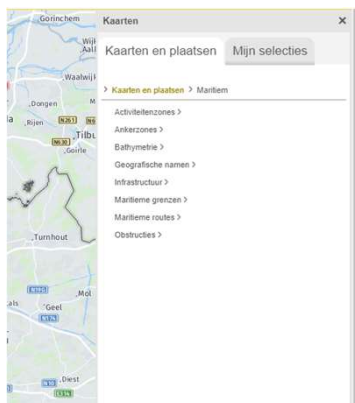


AGENCY FOR  
MARITIME &  
COASTAL SERVICES

# MSDI Status

BS-NSMSDIWG 9



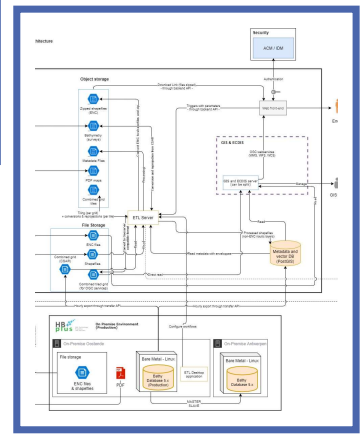
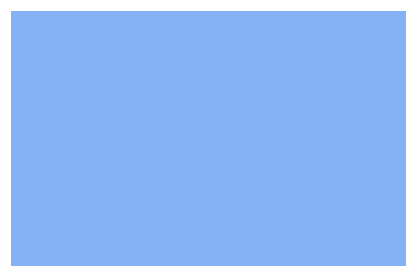
[www.geopunt.be](http://www.geopunt.be)

# National SDI cooperation

---

Geopunt is the central hub for the exchange of geographical information in Flanders and as such the main node for Flanders in the European Geographical data infrastructure. Recently data governed by the section Coast's hydrographic services has been incorporated on the Geopunt dataportal. The following themes are available at the moment: hydrography, maritime governance, transportation, and industry.

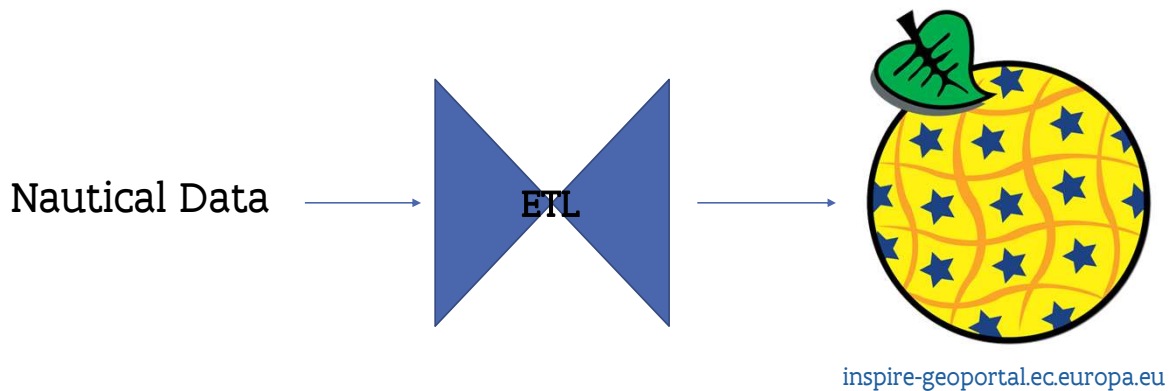
# Renewal of the nautical data portal



In order to increase accessibility to the nautical data governed by the hydrographic service a new data portal will be developed during 2022 based on a hybrid cloud architecture. The aim is to increase the performance of the dataportal and automate the exchange of data between various stakeholders. In order to reach this goal an analysis was performed which determined the technical and user requirements for the new portal.

# INSPIRE

---



The INSPIRE ANNEX I layers have been completed and submitted in 2020. In order to optimise the delivery of INSPIRE ANNEX II and III data, a project has been started to transform our nautical data, via an ETL nodule, to GML files and INSPIRE meta automatically. This data is then entered into the inspire geoportal. The purpose is to create a tool for INSPIRE harmonisation which can be managed internally.

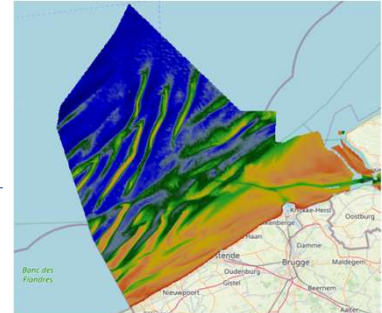


**EMODnet**



European Marine  
Observation and  
Data Network

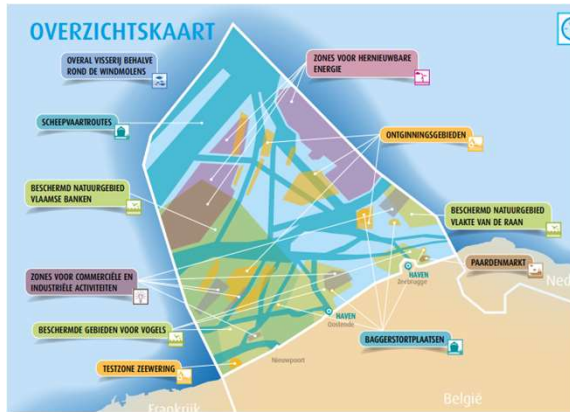
[emodnet.ec.europa.eu](http://emodnet.ec.europa.eu)



# EMODnet

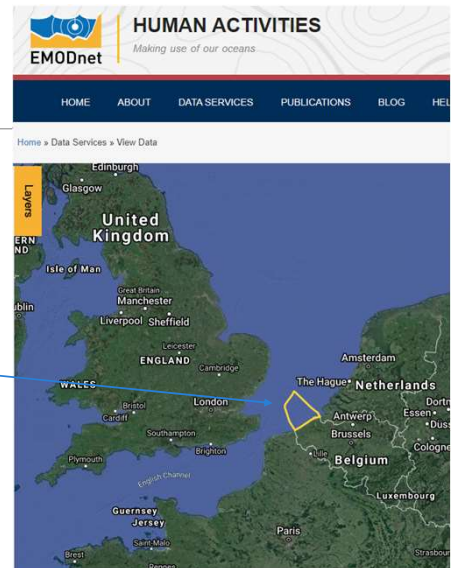
The hydrographic office share High resolution DTM's with EMODnet, as well as the combined bathymetrical grid of the Belgian Continental shelf. CDI's are provided per bathymetrical surface contained in the high resolution DTM's and the combined grid. The process of generating the CDI's has been automated by way of a python script.

# Marine Spatial Planning



©dienst Marien Milieu

MRP 2020 – 2026  
Active since 20/03/2020



Belgium's Marine Spatial planning for the period 2020-2026 has been in effect since march 2020. The plan has been shared via EMODnet's Human Activities portal since February of 2021.

# Conclusions

---

The previous and coming year the focus was/is on investing in technological improvements for:

- Improved accessibility to the marine datasets;
- Improved shareability of the datasets;
- and improved automation.